

(12) 特許協力条約に基づいて公開された国際出願

(19) 世界知的所有権機関
国際事務局

(43) 国際公開日
2012年8月2日(02.08.2012)



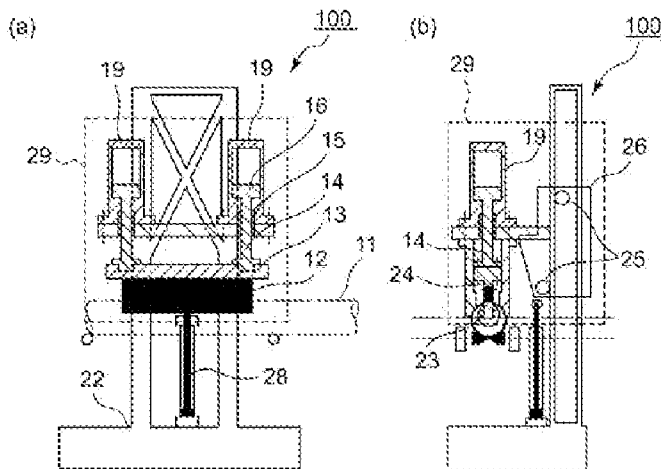
(10) 国際公開番号
WO 2012/102271 A1

- (51) 国際特許分類:
B21D 19/08 (2006.01)
 - (21) 国際出願番号: PCT/JP2012/051449
 - (22) 国際出願日: 2012年1月24日(24.01.2012)
 - (25) 国際出願の言語: 日本語
 - (26) 国際公開の言語: 日本語
 - (30) 優先権データ:
特願 2011-015320 2011年1月27日(27.01.2011) JP
 - (71) 出願人(米国を除く全ての指定国について): 荒木
技研工業株式会社(ARAKI TECHNICAL AND RE-
SEARCH CO., LTD) [JP/JP]; 〒2270031 神奈川県横
浜市青葉区寺家町3 1 1 Kanagawa (JP).
 - (72) 発明者; および
 - (75) 発明者/出願人(米国についてのみ): 荒木 勝輝
(ARAKI Katsuki) [JP/JP]; 〒2270031 神奈川県横
浜市青葉区寺家町3 1 1 Kanagawa (JP).
 - (74) 代理人: 奥町 哲行(OKUMACHI Tetsuyuki); 〒
2240021 神奈川県横浜市都筑区北山田6-5 2
- 2 - 2 1 1 Kanagawa (JP).
 - (81) 指定国(表示のない限り、全ての種類の国内保
護が可能): AE, AG, AL, AM, AO, AT, AU, AZ, BA,
BB, BG, BH, BR, BW, BY, BZ, CA, CH, CL, CN, CO,
CR, CU, CZ, DE, DK, DM, DO, DZ, EC, EE, EG, ES, FI,
GB, GD, GE, GH, GM, GT, HN, HR, HU, ID, IL, IN, IS,
KE, KG, KM, KN, KP, KR, KZ, LA, LC, LK, LR, LS, LT,
LU, LY, MA, MD, ME, MG, MK, MN, MW, MX, MY,
MZ, NA, NG, NI, NO, NZ, OM, PE, PG, PH, PL, PT, QA,
RO, RS, RU, RW, SC, SD, SE, SG, SK, SL, SM, ST, SV,
SY, TH, TJ, TM, TN, TR, TT, TZ, UA, UG, US, UZ, VC,
VN, ZA, ZM, ZW.
 - (84) 指定国(表示のない限り、全ての種類の広域保
護が可能): ARIPO (BW, GH, GM, KE, LR, LS, MW,
MZ, NA, RW, SD, SL, SZ, TZ, UG, ZM, ZW), ユーラシ
ア (AM, AZ, BY, KG, KZ, MD, RU, TJ, TM), ヨー
ロッパ (AL, AT, BE, BG, CH, CY, CZ, DE, DK, EE,
ES, FI, FR, GB, GR, HR, HU, IE, IS, IT, LT, LU, LV, MC,
MK, MT, NL, NO, PL, PT, RO, RS, SE, SI, SK, SM, TR),
OAPI (BF, BJ, CF, CG, CI, CM, GA, GN, GQ, GW, ML,
MR, NE, SN, TD, TG).
- 添付公開書類:
— 国際調査報告(条約第21条(3))

(54) Title: MOLDING DEVICE FOR PULLING OPEN ELONGATED HOLES IN PIPES OR SHEETS

(54) 発明の名称: 管又は板から長穴を引き出す成形装置

[図2]



(57) Abstract: The purpose of the present invention is to provide a high-tolerance molding device that uses a pulling technique to quickly form a desired elongated hole in a workpiece such as a pipe or a sheet with little material loss, due to the use of single-piece molding, while preventing material degradation. The workpiece is provided with a pilot hole that is smaller than but roughly concentric with the desired elongated hole. This molding device is characterized by the provision of: a power-coupling arm that moves in a direction roughly perpendicular to the surface in which the aforementioned pilot hole is provided and can be inserted into said pilot hole; a control unit that controls the movement of said power-coupling arm; and a plug that is prepositioned on the opposite side, with respect to the power-coupling arm, of the surface of the workpiece in which the pilot hole is provided. Said plug can engage with and move together with the arm.

(57) 要約:

[続葉有]

WO 2012/102271 A1